

# How to get to Kelham Island Museum

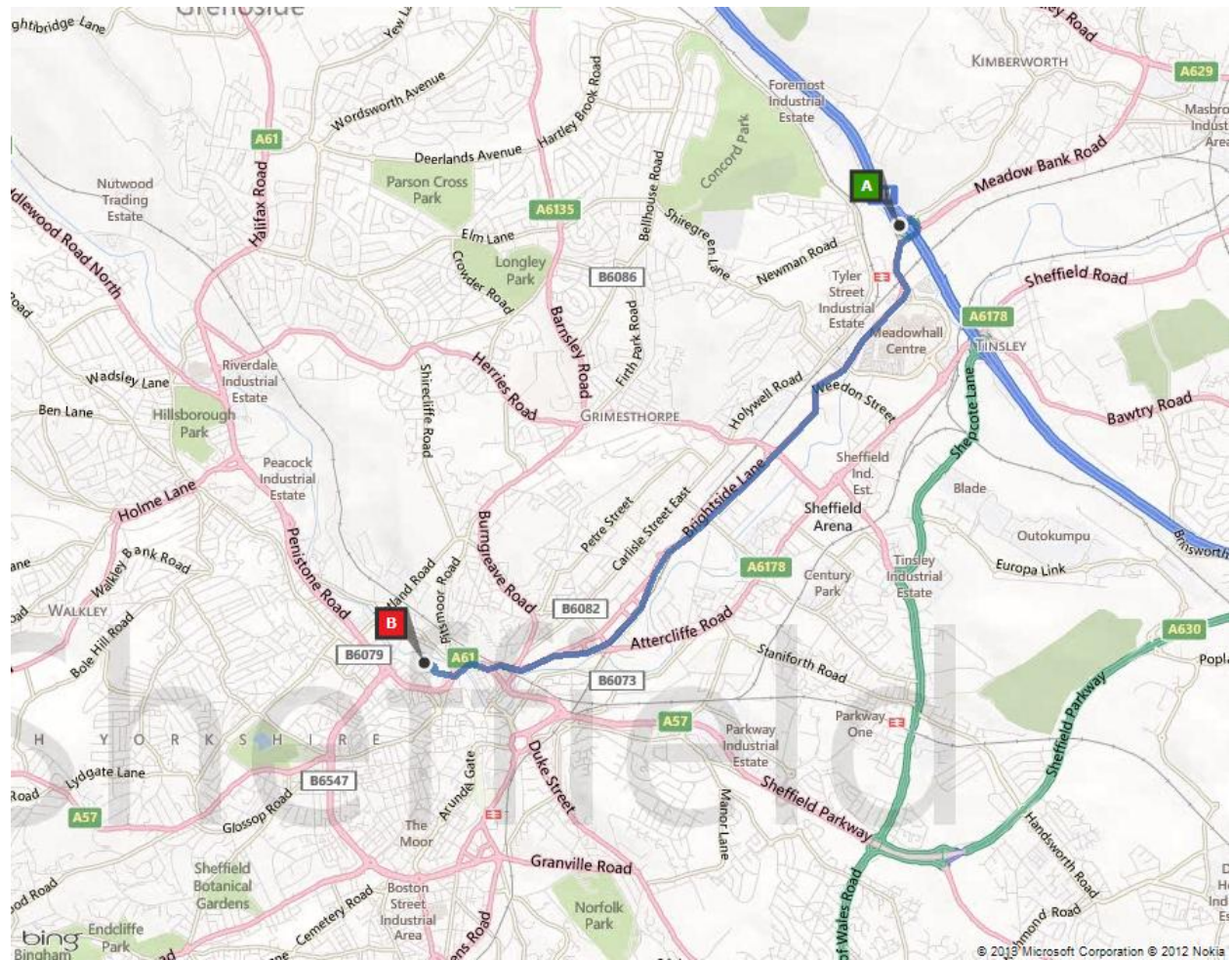
## Sheffield Industrial Museums Trust

Kelham Island Museum Alma Street Sheffield S3 8RY

0114 272 2106 | [ask@simt.co.uk](mailto:ask@simt.co.uk) | [www.simt.co.uk](http://www.simt.co.uk)



From M1 North | Meadowhall



- Exit the M1 at Junction 34 (Meadowhall)
- At the roundabout take the 4<sup>th</sup> exit onto the A6109 (Meadowhall Road) towards Sheffield City Centre with Meadowhall Shopping Centre on your left and the Bus and Railway Station on your right
- Continue on the A6109 (Brightside Lane) for 4 miles until approaching the city centre at Saville Street (Spital Hill) where you will see a Tesco Extra store on your right. Shortly

after the store, bear right at the traffic lights where you will join the A61 | Derek Dooley Way

- At the following sets of traffic lights the A61 Derek Dooley Way bears left over the River Don changing to A61 Corporation Street where you'll see a small Tesco Express on your right with the Unite Student Flats complex above it
- As you bear left stay in the right hand lane and **take the far right hand filter lane at the pedestrian traffic lights to turn right onto Alma Street** at the left hand corner of Tesco
- Follow Alma Street and take the first right turn with The Fat Cat Pub on your left, Kelham Island Brewery on your right and Kelham Riverside Flats directly ahead
- You will see the 'ladle' museum sign (below), head towards The Chimney House located in front of the museum entrance following the cobbled road at the side of the goit



- At the main museum entrance turn right at the Bessemer Converter into the main visitor car park towards the rear of the museum. Parking is free for museum visitors
- Additional free visitor parking is available at the museum car park adjacent to the Fat Cat pub on Alma Street



[facebook.com/KelhamIslandMuseum](https://www.facebook.com/KelhamIslandMuseum)



[@KelhamIsland](https://twitter.com/KelhamIsland)