

How to get to Kelham Island Museum

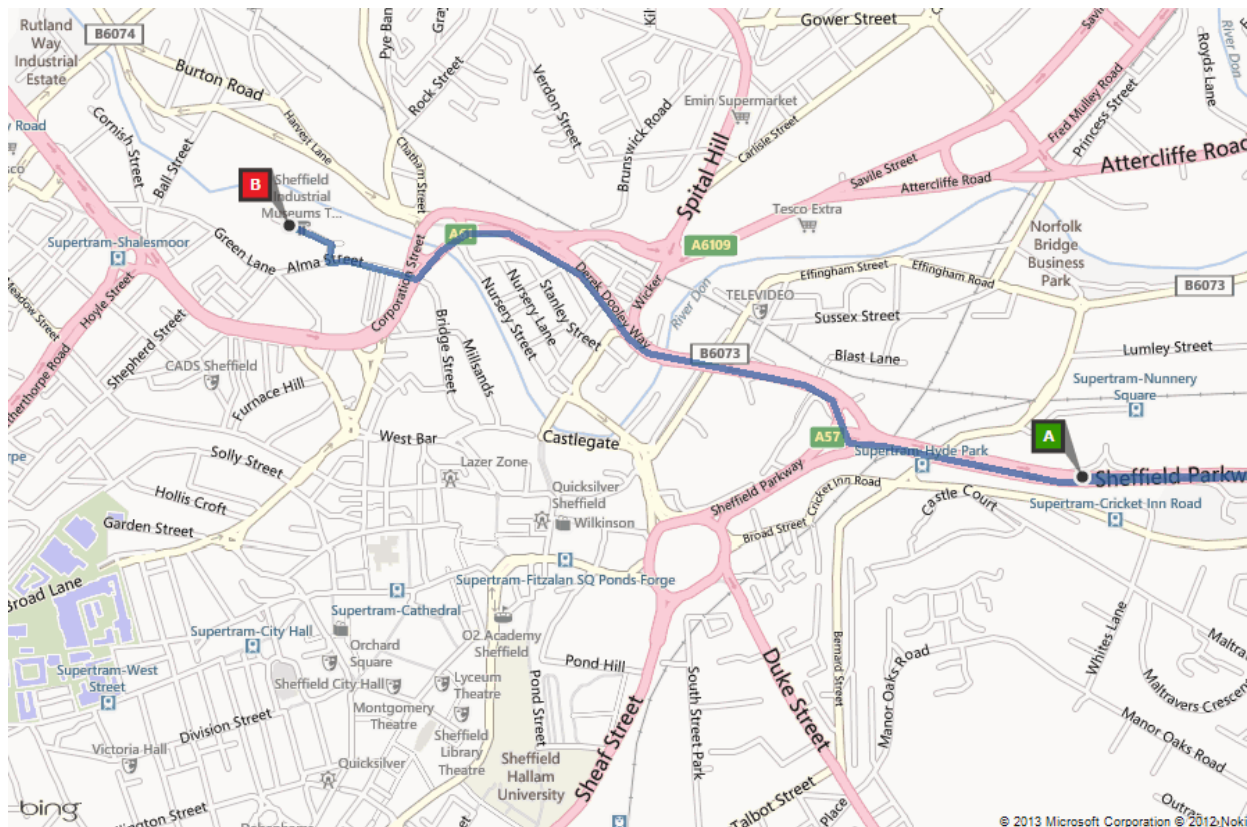
Sheffield Industrial Museums Trust

Kelham Island Museum Alma Street Sheffield S3 8RY

0114 272 2106 | ask@simt.co.uk | www.simt.co.uk



From M1 South | Sheffield Parkway



- Exit M1 at Junction 33
- At roundabout, take A630 exit towards Sheffield centre (*1st exit from South | 3rd exit from North*)
- Follow A57 / Sheffield Parkway for 3 miles towards city centre
- When nearing the city centre the A57 divides into 3 lanes. Move into the far right hand lane and turn right on to A61 / Derek Dooley Way (*if you reach Park Square roundabout at the end of the Parkway you've gone too far but can easily use it to turn back onto the Parkway and take the first left onto A61 / Derek Dooley Way*)
- Keep in the right hand lane and pass through a pedestrian crossing and a second set of traffic lights (crossing Furnival Road) with Victoria Keys Canal Basin, the Hilton Hotel and Holiday Inn Express on your left and the Holiday Inn Royal Victoria on your right

- Keep in the right hand lane and pass through the ‘Wicker’ traffic lights and a second set of traffic lights shortly after
- At the next set of traffic lights the A61 Derek Dooley Way bears left over the River Don changing to A61 Corporation Street where you’ll see a small Tesco Express on your right with the Unite Student Flats complex above it
- As you bear left stay in the right hand lane and **take the far right hand filter lane at the pedestrian traffic lights to turn right onto Alma Street** at the left hand corner of Tesco
- Follow Alma Street and take the first right turn with The Fat Cat Pub on your left, Kelham Island Brewery on your right and Kelham Riverside Flats directly ahead
- You will see the ‘ladle’ museum sign (below), head towards The Chimney House located in front of the museum entrance following the cobbled road at the side of the goit



- At the main museum entrance turn right at the Bessemer Converter into the main visitor car park towards the rear of the museum. Parking is free for museum visitors
- Additional free visitor parking is available at the museum car park adjacent to the Fat Cat pub on Alma Street



facebook.com/KelhamIslandMuseum



[@KelhamIsland](https://twitter.com/KelhamIsland)