

How to get to Kelham Island Museum

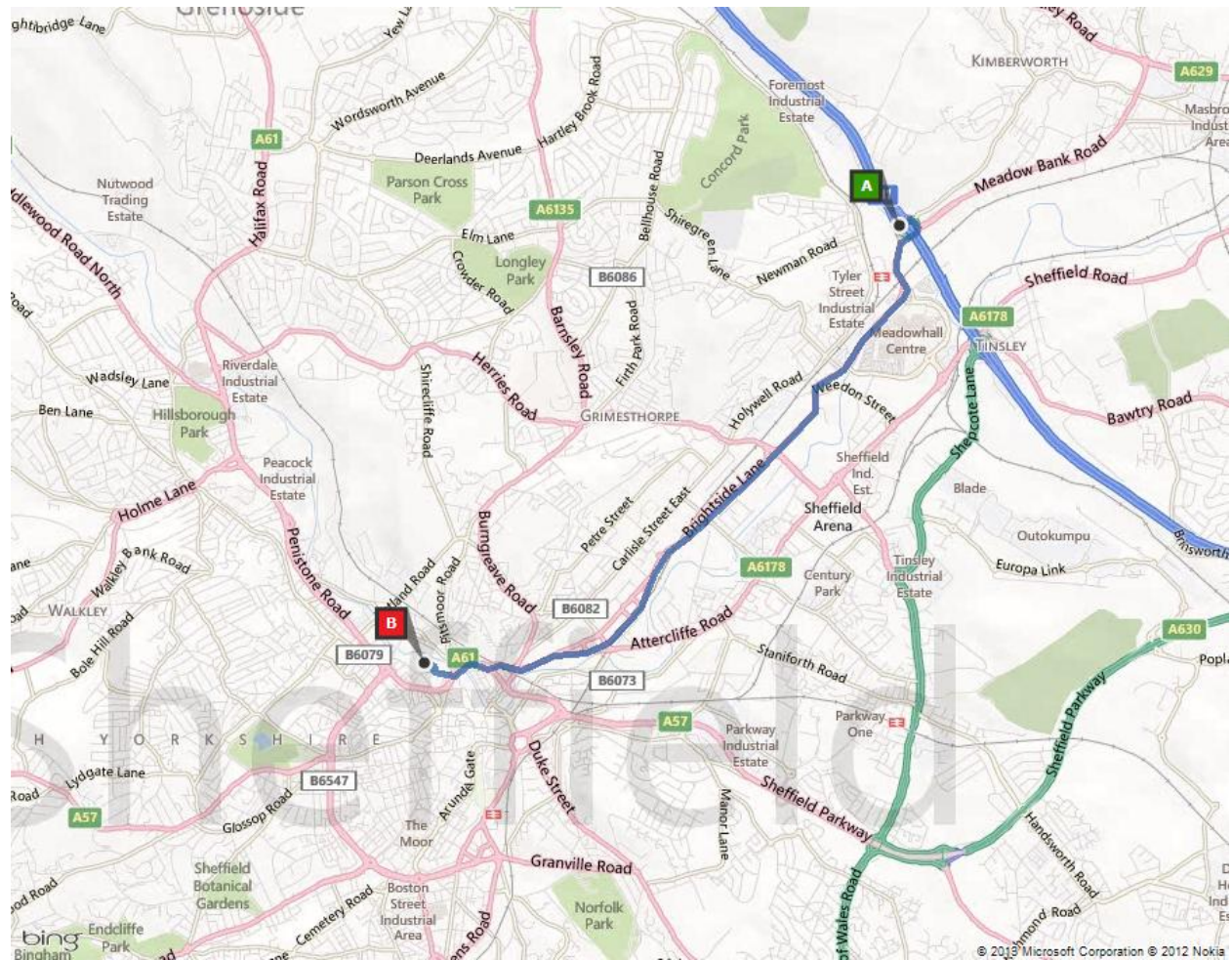
Sheffield Industrial Museums Trust

Kelham Island Museum Alma Street Sheffield S3 8RY

0114 272 2106 | ask@simt.co.uk | www.simt.co.uk



From M1 North | Meadowhall



- Exit the M1 at Junction 34 (Meadowhall)
- At the roundabout take the 4th exit onto the A6109 (Meadowhall Road) towards Sheffield City Centre with Meadowhall Shopping Centre on your left and the Bus and Railway Station on your right
- Continue on the A6109 (Brightside Lane) for 4 miles until approaching the city centre at Saville Street (Spital Hill) where you will see a Tesco Extra store on your right. Shortly

after the store, bear right at the traffic lights where you will join the A61 | Derek Dooley Way

- At the following sets of traffic lights the A61 Derek Dooley Way bears left over the River Don changing to A61 Corporation Street where you'll see a small Tesco Express on your right with the Unite Student Flats complex above it
- As you bear left stay in the right hand lane and **take the far right hand filter lane at the pedestrian traffic lights to turn right onto Alma Street** at the left hand corner of Tesco
- Follow Alma Street and take the first right turn with The Fat Cat Pub on your left, Kelham Island Brewery on your right and Kelham Riverside Flats directly ahead
- You will see the 'ladle' museum sign (below), head towards The Chimney House located in front of the museum entrance following the cobbled road at the side of the goit



- At the main museum entrance turn right at the Bessemer Converter into the main visitor car park towards the rear of the museum. Parking is free for museum visitors
- Additional free visitor parking is available at the museum car park adjacent to the Fat Cat pub on Alma Street



[facebook.com/KelhamIslandMuseum](https://www.facebook.com/KelhamIslandMuseum)



[@KelhamIsland](https://twitter.com/KelhamIsland)